



Light weight, long-life, and seamless thermoplastic tank construction

Impervious to water quality variations

No anode rod required

All plumbing connections are top-mount (on all models)

Single bolt stainless steel collar streamlines element access

- No required maintenance
- Adjustable setpoint and differential
- Available mixing valve kit sold separately
- 10 year, non-prorated residential warranty

Exceptional Performance with High Efficiency

The Featherweight (FW) line by Vaughn Thermal Corporation represents the latest in water heater and storage tank innovation. With standard top-mount connections and a single bolt stainless steel collar across all models, Featherweight tanks ensure a streamlined installation process. The single monolithic vessel construction will provide years of worry-free service in any residential or commercial application.

Applications

Residential, restaurants, schools, office buildings, and much more. Especially well suited for applications where the installation site is difficult to get to.

Featherweight MP Electric Water Heater

Available in 30, 45, & 55 Gallon Capacities



FW

S E R I E S



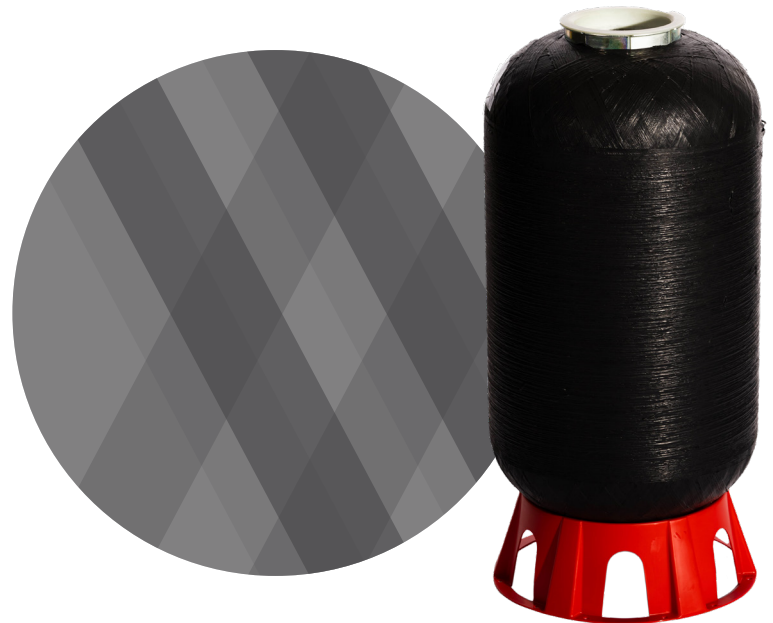
978-462-6683
vaughncorp.com
sales@vaughncorp.com

THE DIFFERENCE: THERMOPLASTIC LINING

Thermoplastic lined tanks offer significant longevity, trouble-free operation and a lower lifetime cost.

Thermoplastic lining provides guaranteed 100% coverage with a minimum thickness of 0.125" Thermoplastic over all internal tank surfaces. In comparison, glass lining is approximately 0.005" thick (thickness of a single piece of paper).

- Made with polybutene and polypropylene
- Accelerated age and temperature testing = **40+ year service life**
- 100% Recyclable
- Lightweight (**<150 lbs shipping weight**)



The inner liner structure and the reinforced structure are highly compatible. During the manufacturing process both structures are fused together while molten to form a single structure called a monolithic structure.

How does Featherweight interact with water?

The two bonded layers of the Featherweight tank continuously replenish and rebalance antioxidant levels throughout the vessel over several decades of service.

Phase 1

The vessel filled with water

Phase 2

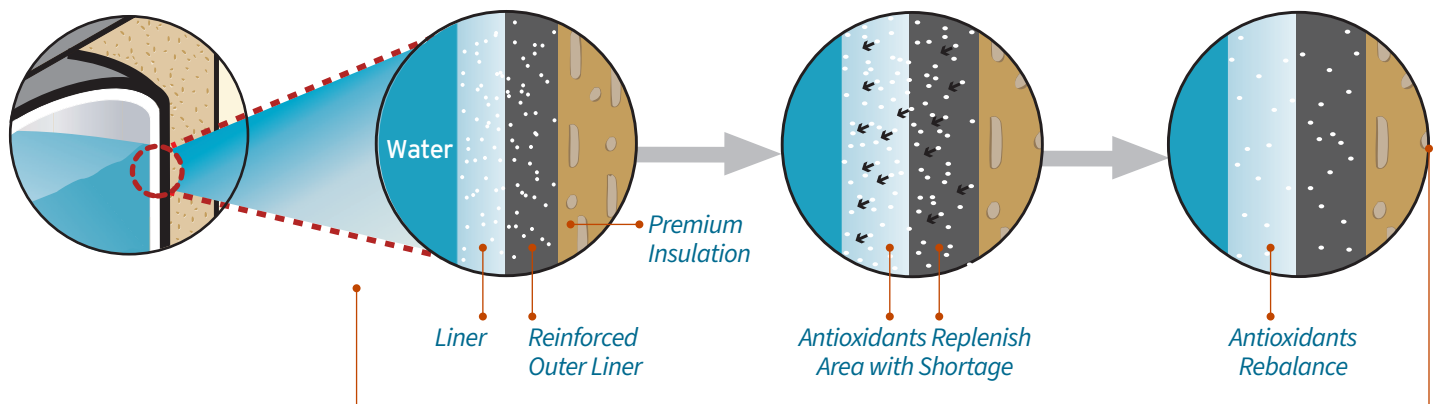
Aggressive water with oxygen attacks liner, depleting antioxidants

Phase 3

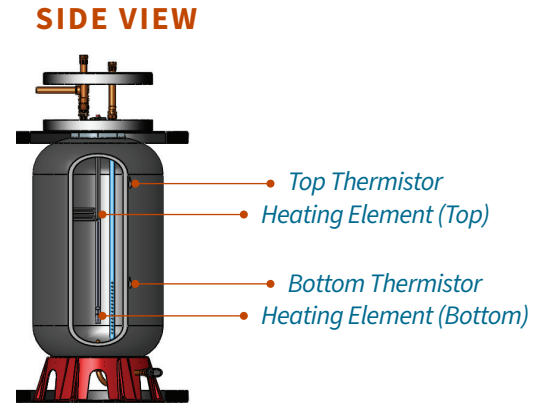
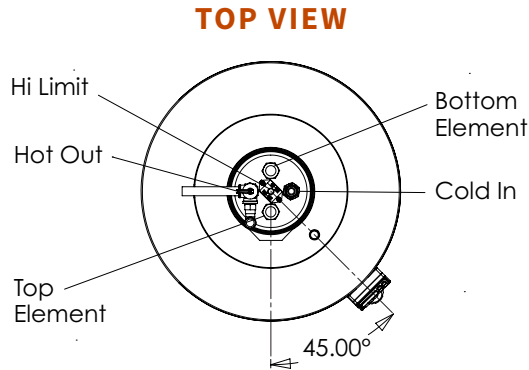
Antioxidants migrate to areas where antioxidants have been depleted

Phase 4

Antioxidants Rebalance



*Please note that this cycle as depicted above is continuous and takes place over several decades.



DIMENSIONS

Model	Overall Dimensions (In)		Connections	
	Height	Diameter	Cold water Inlet	Hot Water Outlet
MP30F	49	25	3/4" Union	3/4" Union
MP45F	62	25	3/4" Union	3/4" Union
MP55F	49.5	30	3/4" Union	3/4" Union

CLEARANCE REQUIREMENTS

Capacity (Gal)	Measured from Floor Height Clearance Required to Remove Electric Elements (In)
30	57"
45	69"
55	57"

PERFORMANCE SPECIFICATIONS

Model Number	Rated Storage Volume (Gal)	1 st Hour Rating (GHP)	Usage Bin	Uniform Energy Factor
MP30F	30	42	Low Usage	0.92
MP45F	44	57	Medium Usage	0.92
MP55F	54	58	Medium Usage	0.92

Top Mount Element Assembly

- Low watt density incoloy elements
- 3800, 4500, and 6000W elements available, additional configurations coming soon
- No need to drain tank to service
- Single bolt stainless collar clamp makes element assembly simple, streamlining service calls



Featherweight Controller (ETC)

- Easily adjustable setpoint
- Streamlined user interface
- Vacation mode
- Optional customer override
- Full unit diagnostics



OPTIONAL MIXING VALVE KIT

Boost the capacity of your Featherweight Electric Tank

Vaughn’s Mixing Valve Kit increases the capacity of our Featherweight 30, 45, and 55 gallon electric tanks to match that of a conventional 80 gallon electric water heater. It does this by storing the water in the smaller tanks at an extra high temperature and mixing it with colder water to deliver it at a preset temperature. This process uses less of the stored hot water, making it last longer thus making the water heater seem larger than it is.

Features

- Simple mixing valve adapter kit, purchased separately.
- Kit can be installed on a new tank or retrofitted to your current tank.
- Can be easily adjusted to provide increased hot water delivery.
- Provides scald protection.

MIXING VALVE FIRST HOUR TESTING

Rating Not Certified by AHRI

Mixing Valve	Tank Setpoint (°F)	First Hour Gallons (125° F – 110° F)	% Increase from 125° F	Extra Gallons in First Hour
30 Gallon	125	42	0%	0.0
	140	51	21%	9.0
	150	59	40%	17.0
	160	64	52%	22.0
45 Gallon	125	57	0%	0.0
	140	67	22%	12.0
	150	77	40%	22.0
	160	84	53%	29.0
55 Gallon	125	58	0%	0.0
	140	78	34%	20.0
	150	89	53%	31.0
	160	100	72%	42.0



ABOUT VAUGHN

Headquartered in Massachusetts since 1961, Vaughn Thermal Corporation is the leading manufacturer of HydraStone™ lined and lightweight, thermoplastic water heaters. The company manufactures electric, hybrid, indirect and solar water heaters for residential and commercial applications and manufactures digital energy controllers and electronic devices used by electric utilities for load controlling water heaters.

V1016-B-20260609